

B1-L02-01, B1-L04-01 & B1-L06-01



HEYBOURNE
PARK
NW9

LEVELS 2, 4 & 6

1 bedroom apartment

BLOCK A1



Kitchen/Living/Dining

7.04m x 3.85m 23'1" x 12'7"

Bedroom

3.97m x 3.25m 13'0" x 10'8"

Balcony

3.04m x 1.65m 10'0" x 5'5"

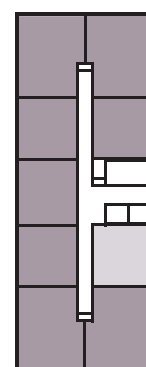
Gross Internal Area

50.50 sq m 543.58 sq ft

Key:

DW – Dishwasher FF – Fridge Freezer FST – Free-standing Table HIU – Heat Interface Unit
MVHR – Mechanical Ventilation Heat Recovery system W – Built-in Wardrobe WD – Washer Dryer

The floorplans depict a typical layout of this apartment type. For exact apartment specification, details of external and internal finishes, dimensions and floorplan differences, consult your Sales Executive. Any areas, measurements or distances quoted are approximate only and should not be used when ordering floor coverings or furnishings. Floorplans are not shown to scale.



LEVEL 9	
LEVEL 8	
LEVEL 7	
B1-L06-01	LEVEL 6
	LEVEL 5
B1-L04-01	LEVEL 4
	LEVEL 3
B1-L02-01	LEVEL 2
	LEVEL 1

B1-L03-01, B1-L05-01 & B1-L07-01

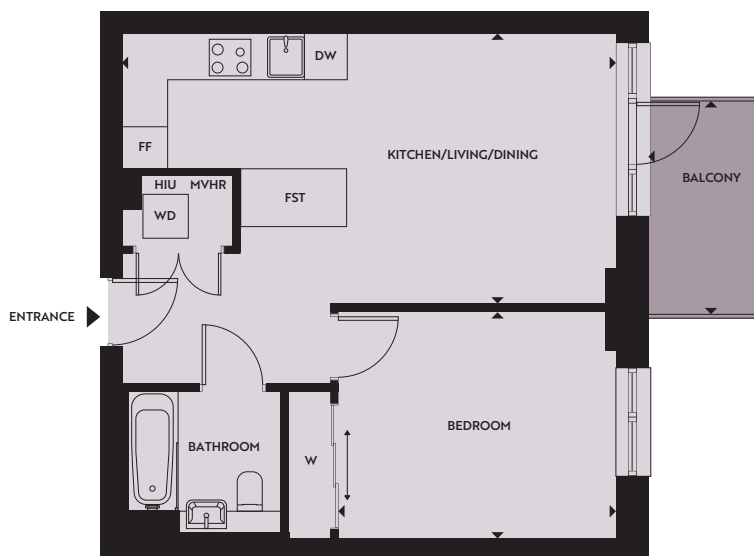


HEYBOURNE
PARK
NW9

LEVELS 3, 5 & 7

1 bedroom apartment

BLOCK A1



Kitchen/Living/Dining

7.04m x 3.85m 23'1" x 12'7"

Bedroom

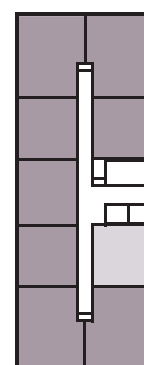
3.97m x 3.25m 13'0" x 10'8"

Balcony

3.04m x 1.65m 10'0" x 5'5"

Gross Internal Area

50.50 sq m 543.58 sq ft



Key:

DW – Dishwasher **FF** – Fridge Freezer **FST** – Free-standing Table **HIU** – Heat Interface Unit
MVHR – Mechanical Ventilation Heat Recovery system **W** – Built-in Wardrobe **WD** – Washer Dryer

LEVEL 9
LEVEL 8
B1-L07-01
LEVEL 6
B1-L05-01
LEVEL 4
B1-L03-01
LEVEL 2
LEVEL 1

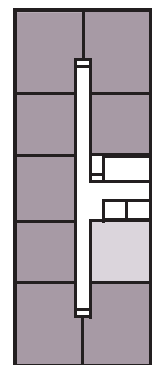
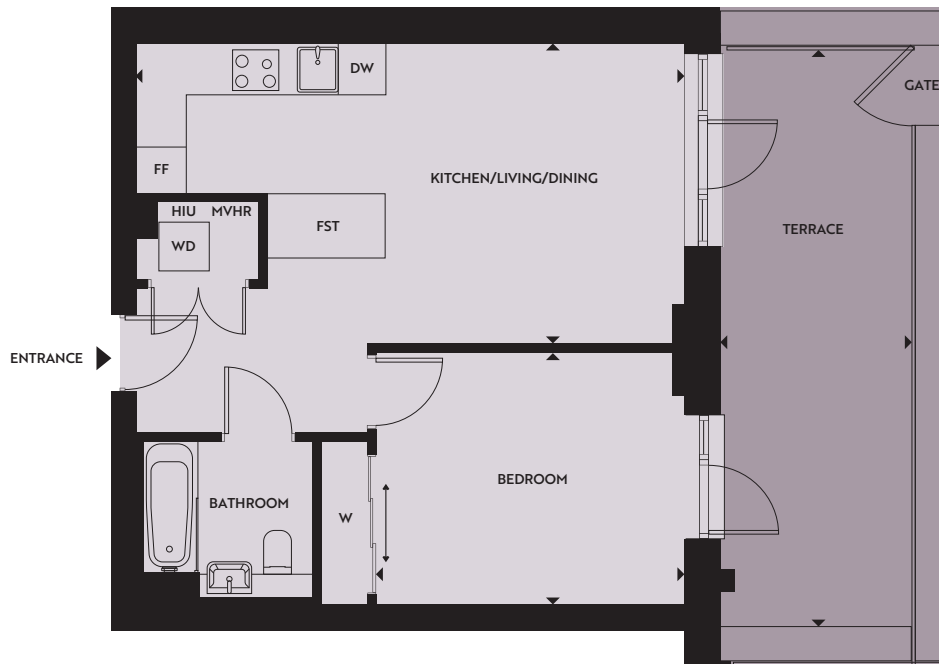
The floorplans depict a typical layout of this apartment type. For exact apartment specification, details of external and internal finishes, dimensions and floorplan differences, consult your Sales Executive. Any areas, measurements or distances quoted are approximate only and should not be used when ordering floor coverings or furnishings. Floorplans are not shown to scale.

B1-L01-01

LEVEL 1

1 bedroom apartment

BLOCK A1



Kitchen/Living/Dining

7.04m x 3.85m

23'1" x 12'7"

Bedroom

3.97m x 3.25m

13'0" x 10'8"

Terrace

7.38m x 2.34m

24'2" x 8'0"

Gross Internal Area


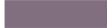







50.50 sq m

543.58 sq ft

Key:

DW – Dishwasher **FF** – Fridge Freezer **FST** – Free-standing Table **HIU** – Heat Interface Unit
MVHR – Mechanical Ventilation Heat Recovery system **W** – Built-in Wardrobe **WD** – Washer Dryer

The floorplans depict a typical layout of this apartment type. For exact apartment specification, details of external and internal finishes, dimensions and floorplan differences, consult your Sales Executive. Any areas, measurements or distances quoted are approximate only and should not be used when ordering floor coverings or furnishings. Floorplans are not shown to scale.

	LEVEL 9
	LEVEL 8
	LEVEL 7
	LEVEL 6
	LEVEL 5
	LEVEL 4
	LEVEL 3
	LEVEL 2
	LEVEL 1

B1-L02-03, B1-L03-03, B1-L04-03, B1-L05-03, B1-L06-03 & B1-L07-03

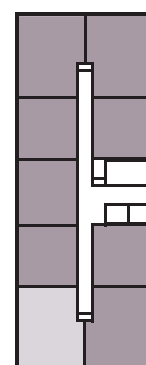
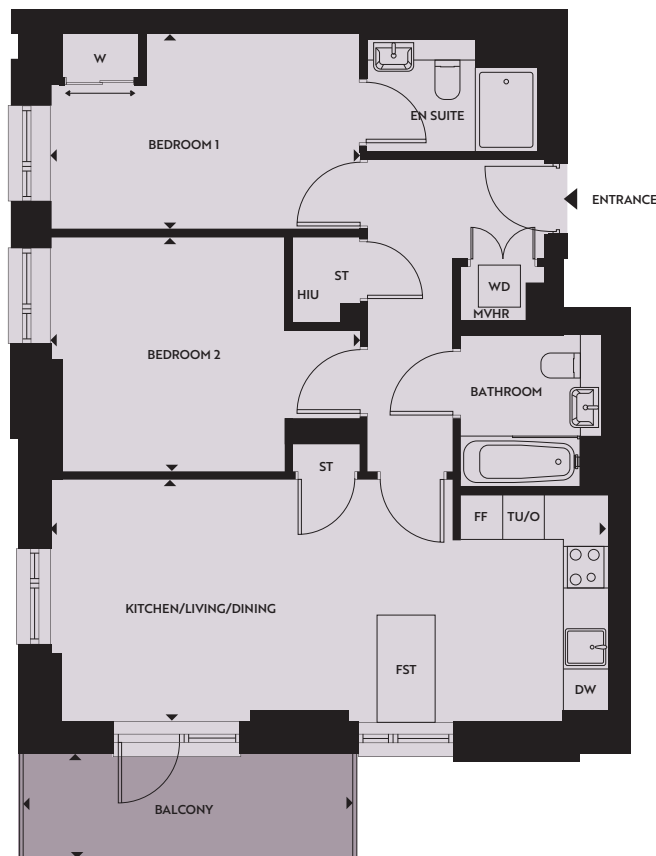
LEVELS 2, 3, 4, 5, 6 & 7

2 bedroom apartment

BLOCK A1



HEYBOURNE
PARK
NW9



Kitchen/Living/Dining

7.95m x 3.46m

26'1" x 11'4"

Balcony

4.69m x 1.49m

15'5" x 4'11"

Bedroom 1

4.41m x 2.80m

14'5" x 9'2"

Gross Internal Area

73.57 sq m

791.90 sq ft

Bedroom 2

4.41m x 3.35m

14'5" x 11'0"

Key:

DW – Dishwasher **FF** – Fridge Freezer **FST** – Free-standing Table **HIU** – Heat Interface Unit

MVHR – Mechanical Ventilation Heat Recovery system **ST** – Storage **TU/O** – Tall Unit with integrated Oven

W – Built-in Wardrobe **WD** – Washer Dryer

The floorplans depict a typical layout of this apartment type. For exact apartment specification, details of external and internal finishes, dimensions and floorplan differences, consult your Sales Executive. Any areas, measurements or distances quoted are approximate only and should not be used when ordering floor coverings or furnishings. Floorplans are not shown to scale.

LEVEL 9
LEVEL 8
B1-L07-03
B1-L06-03
B1-L05-03
B1-L04-03
B1-L03-03
B1-L02-03
LEVEL 1

B1-L01-03

LEVEL 1

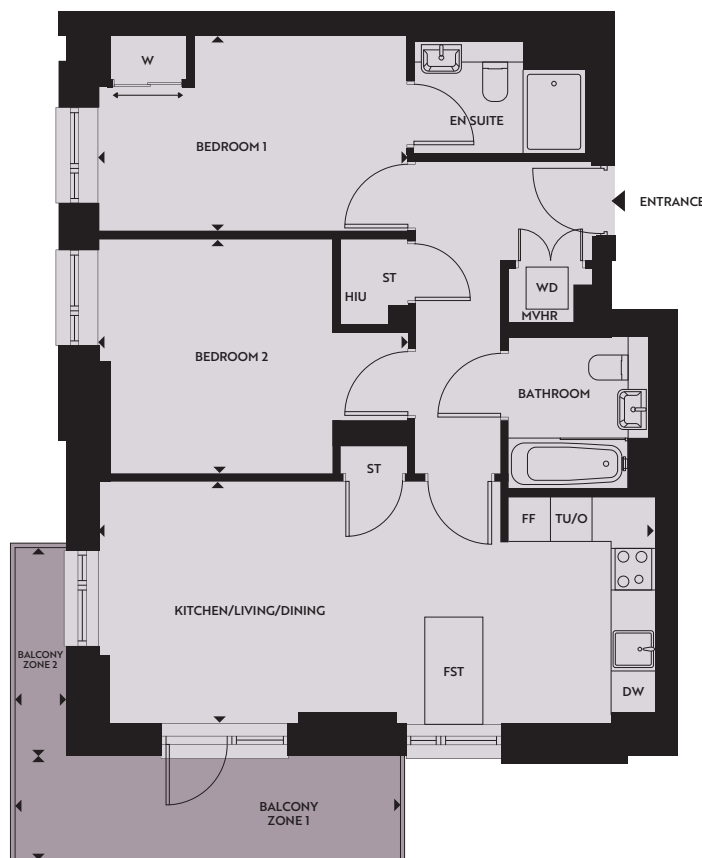
2 bedroom apartment

BLOCK A1



HEYBOURNE
PARK

NW9



Kitchen/Living/Dining

7.95m x 3.46m

26'1" x 11'4"

Balcony Zone 1

5.49m x 1.49m

18'0" x 4'11"

Bedroom 1

4.41m x 2.80m

14'5" x 9'2"

Balcony Zone 2

2.97m x 0.74m

9'9" x 2'5"

Bedroom 2

4.41m x 3.35m

14'5" x 11'0"

Gross Internal Area

73.57 sq m

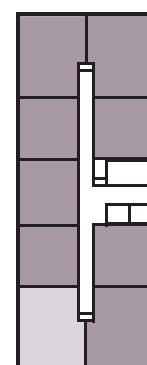
791.90 sq ft

Key:

DW – Dishwasher **FF** – Fridge Freezer **FST** – Free-standing Table **HIU** – Heat Interface Unit

MVHR – Mechanical Ventilation Heat Recovery system **ST** – Storage **TU/O** – Tall Unit with integrated Oven

W – Built-in Wardrobe **WD** – Washer Dryer



	LEVEL 9
	LEVEL 8
	LEVEL 7
	LEVEL 6
	LEVEL 5
	LEVEL 4
	LEVEL 3
	LEVEL 2
	LEVEL 1

The floorplans depict a typical layout of this apartment type. For exact apartment specification, details of external and internal finishes, dimensions and floorplan differences, consult your Sales Executive. Any areas, measurements or distances quoted are approximate only and should not be used when ordering floor coverings or furnishings. Floorplans are not shown to scale.

B1-L02-02, B1-L03-02, B1-L04-02, B1-L05-02, B1-L06-02 & B1-L07-02

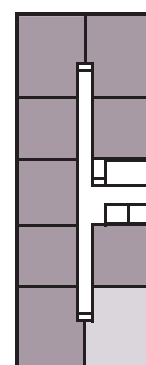
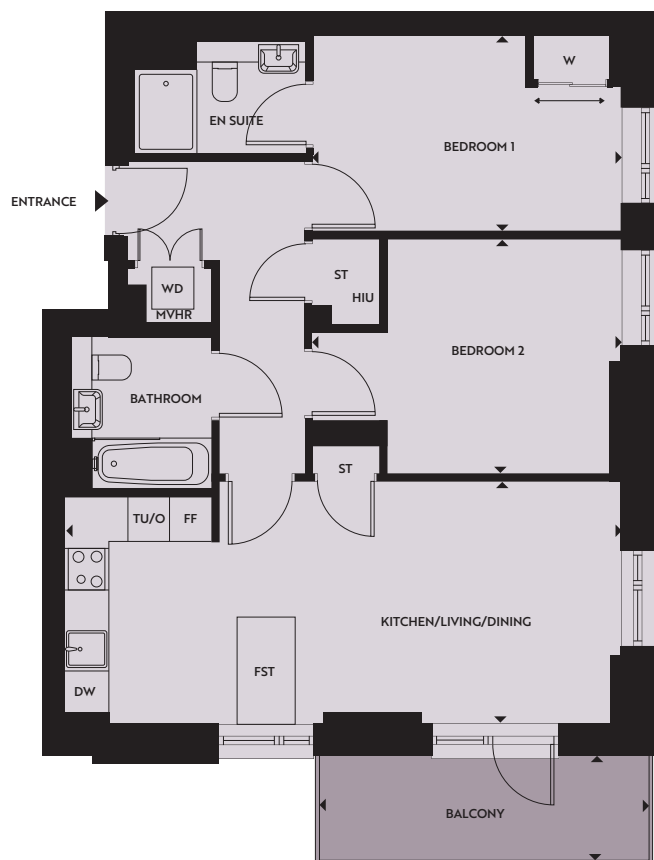
LEVELS 2, 3, 4, 5, 6 & 7

2 bedroom apartment

BLOCK A1



HEYBOURNE
PARK
NW9



Kitchen/Living/Dining

7.95m x 3.46m

26'1" x 11'4"

Balcony

4.69m x 1.49m

15'5" x 4'11"

Bedroom 1

4.41m x 2.80m

14'5" x 9'2"

Gross Internal Area

73.57 sq m

791.90 sq ft

Bedroom 2

4.41m x 3.35m

14'5" x 11'0"

Key:

DW – Dishwasher **FF** – Fridge Freezer **FST** – Free-standing Table **HIU** – Heat Interface Unit

MVHR – Mechanical Ventilation Heat Recovery system **ST** – Storage **TU/O** – Tall Unit with integrated Oven

W – Built-in Wardrobe **WD** – Washer Dryer

The floorplans depict a typical layout of this apartment type. For exact apartment specification, details of external and internal finishes, dimensions and floorplan differences, consult your Sales Executive. Any areas, measurements or distances quoted are approximate only and should not be used when ordering floor coverings or furnishings. Floorplans are not shown to scale.

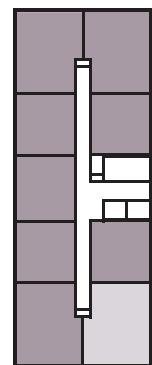
LEVEL 9
LEVEL 8
B1-L07-02
B1-L06-02
B1-L05-02
B1-L04-02
B1-L03-02
B1-L02-02
LEVEL 1

B1-L01-02

LEVEL 1

2 bedroom apartment

BLOCK A1



Kitchen/Living/Dining

7.95m x 3.46m

26'1" x 11'4"

Terrace

5.19m x 7.37m

24'2" x 17'0"

Bedroom 1

4.41m x 2.80m

14'5" x 9'2"

Balcony

4.69m x 1.49m

15'5" x 4'11"

Bedroom 2

4.41m x 3.35m

14'5" x 11'0"

Gross Internal Area

73.57 sq m

791.90 sq ft

Key:

DW – Dishwasher **FF** – Fridge Freezer **FST** – Free-standing Table **HIU** – Heat Interface Unit
MVHR – Mechanical Ventilation Heat Recovery system **ST** – Storage **TU/O** – Tall Unit with integrated Oven
W – Built-in Wardrobe **WD** – Washer Dryer

The floorplans depict a typical layout of this apartment type. For exact apartment specification, details of external and internal finishes, dimensions and floorplan differences, consult your Sales Executive. Any areas, measurements or distances quoted are approximate only and should not be used when ordering floor coverings or furnishings. Floorplans are not shown to scale.

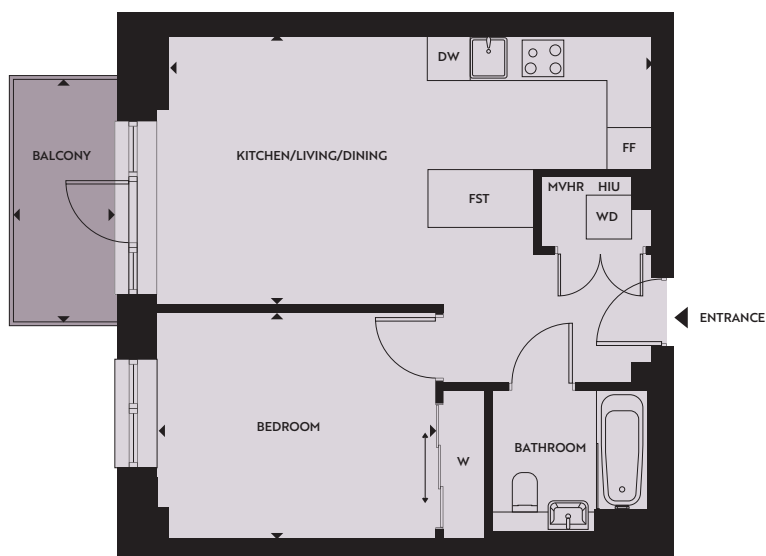
	LEVEL 9
	LEVEL 8
	LEVEL 7
	LEVEL 6
	LEVEL 5
	LEVEL 4
	LEVEL 3
	LEVEL 2
	LEVEL 1

B1-L01-04, B1-L02-04, B1-L03-04, B1-L04-04, B1-L05-04, B1-L06-04 & B1-L07-04

LEVELS 1, 2, 3, 4, 5, 6 & 7

1 bedroom apartment

BLOCK A1



Kitchen/Living/Dining

6.88m x 3.85m 22'7" x 12'7"

Bedroom

3.97m x 3.21m 13'0" x 10'6"

Balcony

3.45m x 1.51m 11'4" x 4'11"

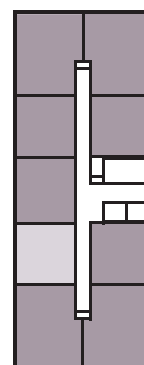
Gross Internal Area

50.14 sq m 539.70 sq ft

Key:

DW – Dishwasher **FF** – Fridge Freezer **FST** – Free-standing Table **HIU** – Heat Interface Unit
MVHR – Mechanical Ventilation Heat Recovery system **W** – Built-in Wardrobe **WD** – Washer Dryer

The floorplans depict a typical layout of this apartment type. For exact apartment specification, details of external and internal finishes, dimensions and floorplan differences, consult your Sales Executive. Any areas, measurements or distances quoted are approximate only and should not be used when ordering floor coverings or furnishings. Floorplans are not shown to scale.



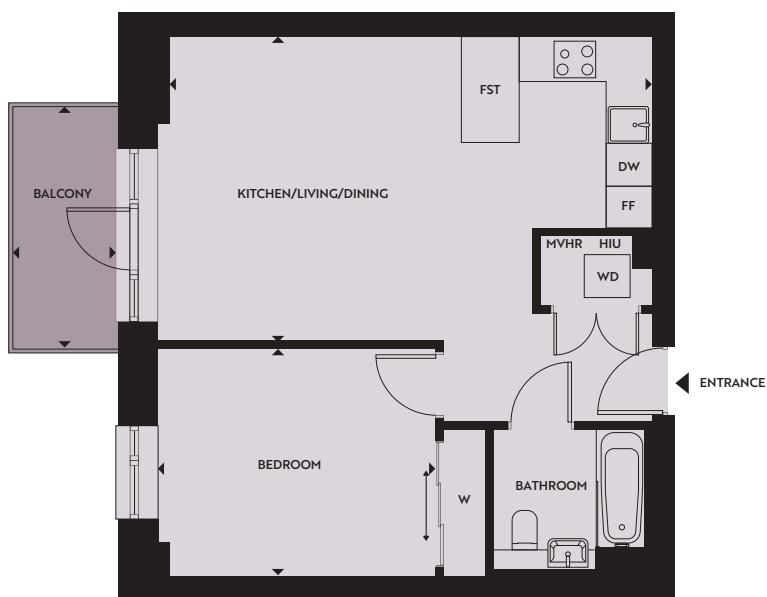
	LEVEL 9
	LEVEL 8
	B1-L07-04
	B1-L06-04
	B1-L05-04
	B1-L04-04
	B1-L03-04
	B1-L02-04
	B1-L01-04

B1-L01-05, B1-L02-05, B1-L03-05, B1-L04-05, B1-L05-05, B1-L06-05 & B1-L07-05

LEVELS 1, 2, 3, 4, 5, 6 & 7

1 bedroom apartment

BLOCK A1



Kitchen/Living/Dining

6.88m x 4.35m 22'7" x 14'3"

Bedroom

3.97m x 3.26m 13'0" x 10'8"

Balcony

3.45m x 1.51m 11'4" x 4'11"

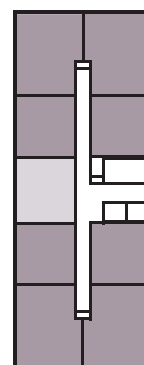
Gross Internal Area

53.98 sq m 581.04 sq ft

Key:

DW – Dishwasher **FF** – Fridge Freezer **FST** – Free-standing Table **HIU** – Heat Interface Unit
MVHR – Mechanical Ventilation Heat Recovery system **W** – Built-in Wardrobe **WD** – Washer Dryer

The floorplans depict a typical layout of this apartment type. For exact apartment specification, details of external and internal finishes, dimensions and floorplan differences, consult your Sales Executive. Any areas, measurements or distances quoted are approximate only and should not be used when ordering floor coverings or furnishings. Floorplans are not shown to scale.



LEVEL 9	
LEVEL 8	
B1-L07-05	LEVEL 7
B1-L06-05	LEVEL 6
B1-L05-05	LEVEL 5
B1-L04-05	LEVEL 4
B1-L03-05	LEVEL 3
B1-L02-05	LEVEL 2
B1-L01-05	LEVEL 1

B1-L01-06, B1-L02-06, B1-L03-06, B1-L04-06, B1-L05-06, B1-L06-06 & B1-L07-06

LEVELS 1, 2, 3, 4, 5, 6 & 7

1 bedroom apartment

BLOCK A1



Kitchen/Living/Dining

7.04m x 3.85m 23'1" x 12'7"

Bedroom

3.97m x 3.21m 13'0" x 10'6"

Balcony

3.44m x 1.50m 11'3" x 4'11"

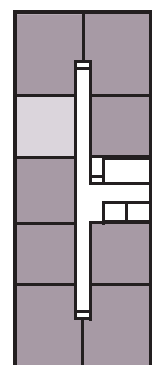
Gross Internal Area


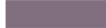

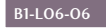
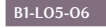




50.07 sq m 538.95 sq ft

Key:

DW – Dishwasher **FF** – Fridge Freezer **FST** – Free-standing Table **HIU** – Heat Interface Unit
MVHR – Mechanical Ventilation Heat Recovery system **W** – Built-in Wardrobe **WD** – Washer Dryer

The floorplans depict a typical layout of this apartment type. For exact apartment specification, details of external and internal finishes, dimensions and floorplan differences, consult your Sales Executive. Any areas, measurements or distances quoted are approximate only and should not be used when ordering floor coverings or furnishings. Floorplans are not shown to scale.



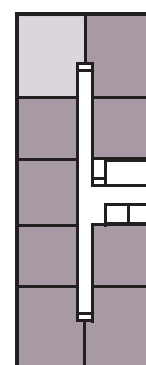
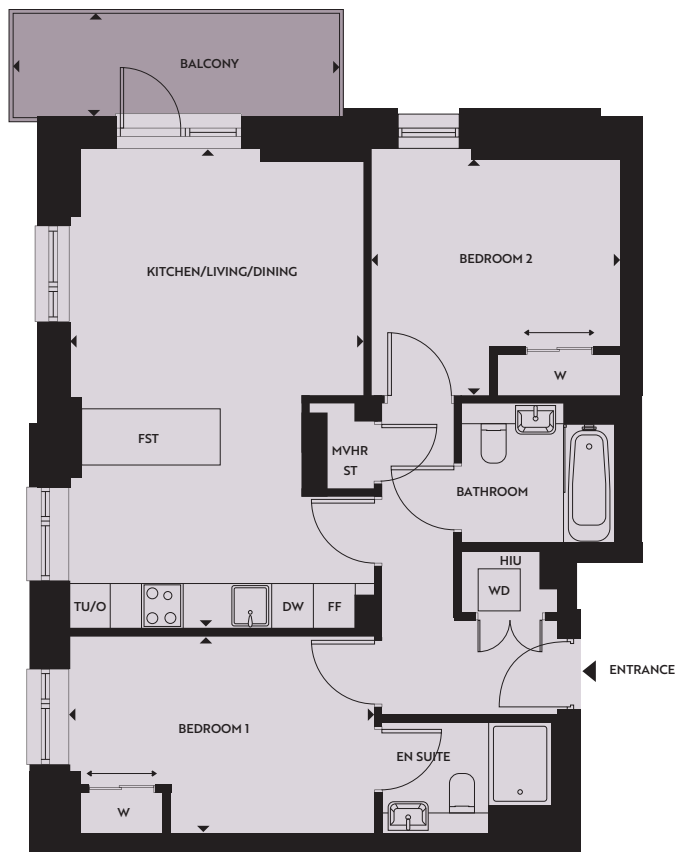
	LEVEL 9
	LEVEL 8
	B1-L07-06
	B1-L06-06
	B1-L05-06
	B1-L04-06
	B1-L03-06
	B1-L02-06
	B1-L01-06

B1-L02-07, B1-L04-07 & B1-L06-07

LEVELS 2, 4 & 6

2 bedroom apartment

BLOCK A1



Kitchen/Living/Dining

6.87m x 4.24m

22'6" x 13'11"

Balcony

4.70m x 1.49m

15'5" x 4'11"

Bedroom 1

4.39m x 2.84m

14'5" x 9'4"

Gross Internal Area

73.41 sq m

790.18 sq ft

Bedroom 2

3.61m x 3.38m

11'10" x 11'1"

Key:

DW – Dishwasher **FF** – Fridge Freezer **FST** – Free-standing Table **HIU** – Heat Interface Unit

MVHR – Mechanical Ventilation Heat Recovery system **ST** – Storage **TU/O** – Tall Unit with integrated Oven

W – Built-in Wardrobe **WD** – Washer Dryer

The floorplans depict a typical layout of this apartment type. For exact apartment specification, details of external and internal finishes, dimensions and floorplan differences, consult your Sales Executive. Any areas, measurements or distances quoted are approximate only and should not be used when ordering floor coverings or furnishings. Floorplans are not shown to scale.

	LEVEL 9
	LEVEL 8
	LEVEL 7
B1-L06-07	LEVEL 6
	LEVEL 5
B1-L04-07	LEVEL 4
	LEVEL 3
B1-L02-07	LEVEL 2
	LEVEL 1

B1-L01-07, B1-L03-07, B1-L05-07 & B1-L07-07

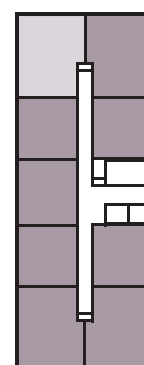


**HEYBOURNE
PARK**
NW9

LEVELS 1, 3, 5 & 7

2 bedroom apartment

BLOCK A1



Kitchen/Living/Dining

6.87m x 4.24m

22'6" x 13'11"

Balcony

4.70m x 1.49m

15'5" x 4'11"

Bedroom 1

4.39m x 2.84m

14'5" x 9'4"

Gross Internal Area

73.41 sq m

790.18 sq ft

Bedroom 2

3.61m x 3.38m

11'10" x 11'1"

Key:

DW – Dishwasher **FF** – Fridge Freezer **FST** – Free-standing Table **HIU** – Heat Interface Unit
MVHR – Mechanical Ventilation Heat Recovery system **ST** – Storage **TU/O** – Tall Unit with integrated Oven
W – Built-in Wardrobe **WD** – Washer Dryer

The floorplans depict a typical layout of this apartment type. For exact apartment specification, details of external and internal finishes, dimensions and floorplan differences, consult your Sales Executive. Any areas, measurements or distances quoted are approximate only and should not be used when ordering floor coverings or furnishings. Floorplans are not shown to scale.

LEVEL 9
LEVEL 8
B1-L07-07
LEVEL 7
LEVEL 6
B1-L05-07
LEVEL 5
LEVEL 4
B1-L03-07
LEVEL 3
LEVEL 2
B1-L01-07
LEVEL 1

B1-L02-08, B1-L03-08, B1-L04-08, B1-L05-08, B1-L06-08 & B1-L07-08

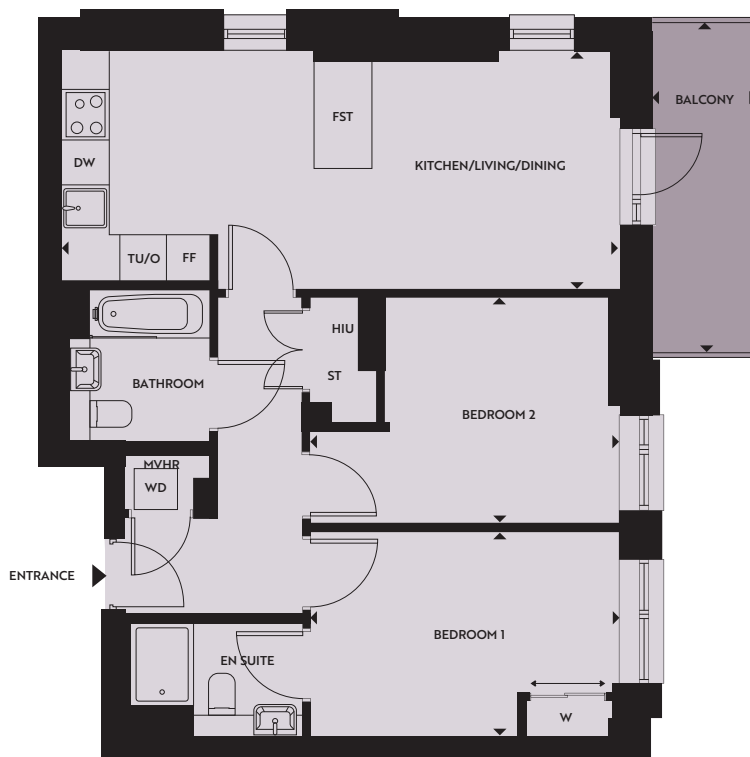
LEVELS 2, 3, 4, 5, 6 & 7

2 bedroom apartment

BLOCK A1



HEYBOURNE
PARK
NW9



Kitchen/Living/Dining

7.95m x 3.40m

26'1" x 11'2"

Balcony

4.70m x 1.49m

15'5" x 4'11"

Bedroom 1

4.41m x 2.97m

14'5" x 9'9"

Gross Internal Area

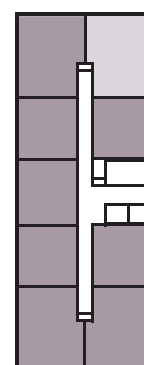
73.66 sq m

792.87 sq ft

Bedroom 2

4.41m x 3.25m

14'5" x 10'8"



Key:

DW – Dishwasher **FF** – Fridge Freezer **FST** – Free-standing Table **HIU** – Heat Interface Unit

MVHR – Mechanical Ventilation Heat Recovery system **ST** – Storage **TU/O** – Tall Unit with integrated Oven

W – Built-in Wardrobe **WD** – Washer Dryer

LEVEL 9
LEVEL 8
B1-L07-08
B1-L06-08
B1-L05-08
B1-L04-08
B1-L03-08
B1-L02-08
LEVEL 1

The floorplans depict a typical layout of this apartment type. For exact apartment specification, details of external and internal finishes, dimensions and floorplan differences, consult your Sales Executive. Any areas, measurements or distances quoted are approximate only and should not be used when ordering floor coverings or furnishings. Floorplans are not shown to scale.

B1-L01-08

LEVEL 1

2 bedroom apartment

BLOCK A1



HEYBOURNE
PARK

NW9



Kitchen/Living/Dining

7.95m x 3.40m

26'1" x 11'2"

Terrace Zone 1

4.11m x 1.50m

13'6" x 4'11"

Bedroom 1

4.41m x 2.97m

14'5" x 9'9"

Terrace Zone 2

6.27m x 2.37m

20'7" x 7'9"

Bedroom 2

4.41m x 3.25m

14'5" x 10'8"

Gross Internal Area

73.66 sq m

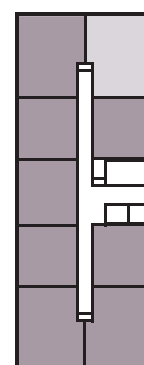
792.87 sq ft

Key:

DW – Dishwasher **FF** – Fridge Freezer **FST** – Free-standing Table **HIU** – Heat Interface Unit

MVHR – Mechanical Ventilation Heat Recovery system **ST** – Storage **TU/O** – Tall Unit with integrated Oven

W – Built-in Wardrobe **WD** – Washer Dryer



	LEVEL 9
	LEVEL 8
	LEVEL 7
	LEVEL 6
	LEVEL 5
	LEVEL 4
	LEVEL 3
	LEVEL 2
	LEVEL 1
	B1-L01-08

The floorplans depict a typical layout of this apartment type. For exact apartment specification, details of external and internal finishes, dimensions and floorplan differences, consult your Sales Executive. Any areas, measurements or distances quoted are approximate only and should not be used when ordering floor coverings or furnishings. Floorplans are not shown to scale.

B1-L02-09, B1-L04-09 & B1-L06-09



**HEYBOURNE
PARK**
NW9

LEVELS 2, 4 & 6

1 bedroom apartment

BLOCK A1



Kitchen/Living/Dining

7.04m x 3.82m 23'1" x 12'6"

Bedroom

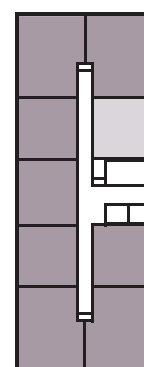
3.97m x 3.25m 13'0" x 10'8"

Balcony

3.04m x 1.65m 10'0" x 5'5"

Gross Internal Area

50.01 sq m 538.30 sq ft



	LEVEL 9
	LEVEL 8
	LEVEL 7
	B1-L06-09 LEVEL 6
	LEVEL 5
	B1-L04-09 LEVEL 4
	LEVEL 3
	B1-L02-09 LEVEL 2
	LEVEL 1

Key:

DW – Dishwasher **FF** – Fridge Freezer **FST** – Free-standing Table **HIU** – Heat Interface Unit
MVHR – Mechanical Ventilation Heat Recovery system **W** – Built-in Wardrobe **WD** – Washer Dryer

The floorplans depict a typical layout of this apartment type. For exact apartment specification, details of external and internal finishes, dimensions and floorplan differences, consult your Sales Executive. Any areas, measurements or distances quoted are approximate only and should not be used when ordering floor coverings or furnishings. Floorplans are not shown to scale.

B1-L03-09, B1-L05-09 & B1-L07-09



**HEYBOURNE
PARK**
NW9

LEVELS 3, 5 & 7

1 bedroom apartment

BLOCK A1



Kitchen/Living/Dining

7.04m x 3.82m 23'1" x 12'6"

Bedroom

3.97m x 3.25m 13'0" x 10'8"

Balcony

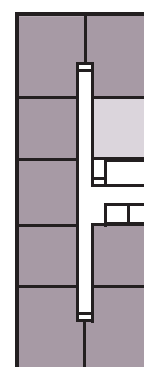
3.04m x 1.65m 10'0" x 5'5"

Gross Internal Area

50.01 sq m 538.30 sq ft

Key:

DW – Dishwasher **FF** – Fridge Freezer **FST** – Free-standing Table **HIU** – Heat Interface Unit
MVHR – Mechanical Ventilation Heat Recovery system **W** – Built-in Wardrobe **WD** – Washer Dryer



	LEVEL 9
	LEVEL 8
	B1-L07-09
	LEVEL 6
	B1-L05-09
	LEVEL 4
	B1-L03-09
	LEVEL 2
	LEVEL 1

The floorplans depict a typical layout of this apartment type. For exact apartment specification, details of external and internal finishes, dimensions and floorplan differences, consult your Sales Executive. Any areas, measurements or distances quoted are approximate only and should not be used when ordering floor coverings or furnishings. Floorplans are not shown to scale.

B1-L01-09

LEVEL 1

1 bedroom apartment

BLOCK A1



Kitchen/Living/Dining

7.04m x 3.79m

23'1" x 12'5"

Bedroom

3.97m x 3.25m

13'0" x 10'8"

Terrace

7.43m x 2.49m

24'4" x 8'2"

Gross Internal Area

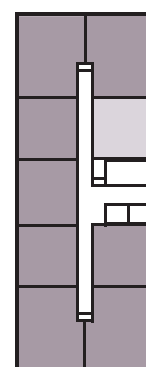
50.01 sq m

538.30 sq ft

Key:

DW – Dishwasher **FF** – Fridge Freezer **FST** – Free-standing Table **HIU** – Heat Interface Unit
MVHR – Mechanical Ventilation Heat Recovery system **W** – Built-in Wardrobe **WD** – Washer Dryer

The floorplans depict a typical layout of this apartment type. For exact apartment specification, details of external and internal finishes, dimensions and floorplan differences, consult your Sales Executive. Any areas, measurements or distances quoted are approximate only and should not be used when ordering floor coverings or furnishings. Floorplans are not shown to scale.



	LEVEL 9
	LEVEL 8
	LEVEL 7
	LEVEL 6
	LEVEL 5
	LEVEL 4
	LEVEL 3
	LEVEL 2
	LEVEL 1

B1-L01-09

B1-L08-01

LEVEL 8

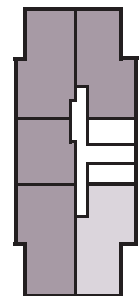
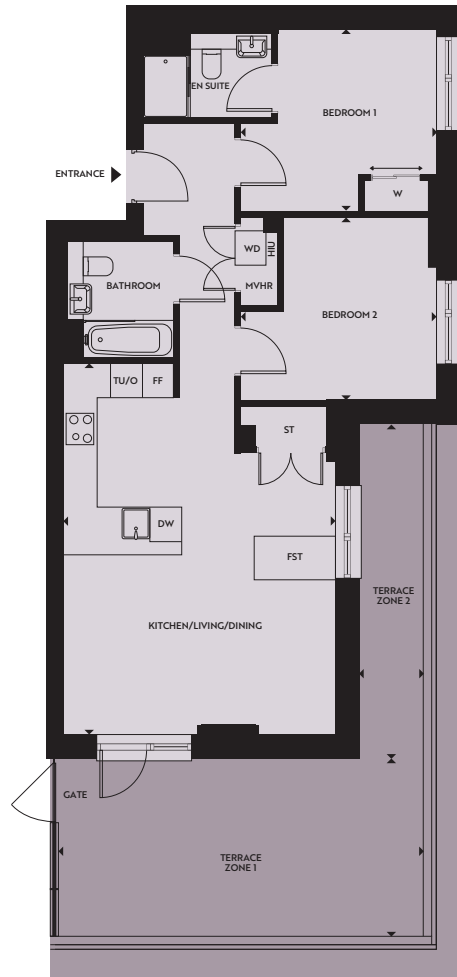
2 bedroom apartment

BLOCK A1



HEYBOURNE
PARK

NW9



Kitchen/Living/Dining 7.00m x 5.09m	23'0" x 16'9"	Terrace Zone 1 6.88m x 3.35m	22'7" x 11'0"
Bedroom 1 3.69m x 3.45m	12'1" x 11'4"	Terrace Zone 2 6.30m x 1.22m	20'8" x 4'0"
Bedroom 2 3.69m x 3.45m	12'1" x 11'4"	Gross Internal Area 75.12 sq m	808.58 sq ft

Key:

DW – Dishwasher **FF** – Fridge Freezer **FST** – Free-standing Table **HIU** – Heat Interface Unit
MVHR – Mechanical Ventilation Heat Recovery system **ST** – Storage **TU/O** – Tall Unit with integrated Oven
W – Built-in Wardrobe **WD** – Washer Dryer

The floorplans depict a typical layout of this apartment type. For exact apartment specification, details of external and internal finishes, dimensions and floorplan differences, consult your Sales Executive. Any areas, measurements or distances quoted are approximate only and should not be used when ordering floor coverings or furnishings. Floorplans are not shown to scale.

- LEVEL 9
- B1-L08-01 LEVEL 8
- LEVEL 7
- LEVEL 6
- LEVEL 5
- LEVEL 4
- LEVEL 3
- LEVEL 2
- LEVEL 1

B1-L08-02

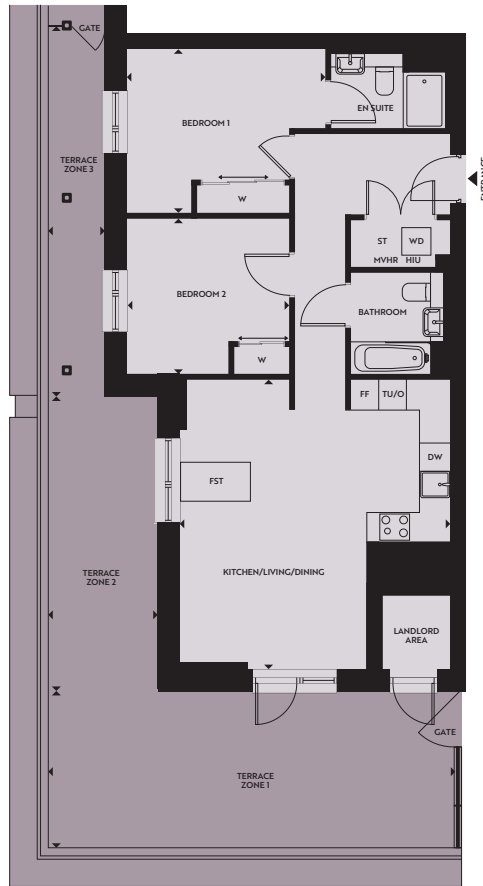
LEVEL 8

2 bedroom apartment

BLOCK A1



**HEYBOURNE
PARK**
NW9



Kitchen/Living/Dining

6.20m x 5.80m

20'4" x 19'0"

Terrace Zone 2

6.30m x 2.34m

20'8" x 7'8"

Bedroom 1

4.26m x 3.50m

14'0" x 11'6"

Terrace Zone 3

7.88m x 1.22m

25'10" x 4'0"

Bedroom 2

3.50m x 3.35m

11'6" x 11'0"

Gross Internal Area

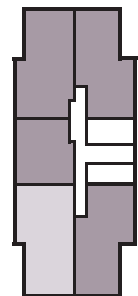
79.32 sq m

853.79 sq ft

Terrace Zone 1

8.68m x 3.35m

28'6" x 11'0"



Key:

DW – Dishwasher **FF** – Fridge Freezer **FST** – Free-standing Table **HIU** – Heat Interface Unit
MVHR – Mechanical Ventilation Heat Recovery system **ST** – Storage **TU/O** – Tall Unit with integrated Oven
W – Built-in Wardrobe **WD** – Washer Dryer

The floorplans depict a typical layout of this apartment type. For exact apartment specification, details of external and internal finishes, dimensions and floorplan differences, consult your Sales Executive. Any areas, measurements or distances quoted are approximate only and should not be used when ordering floor coverings or furnishings. Floorplans are not shown to scale.

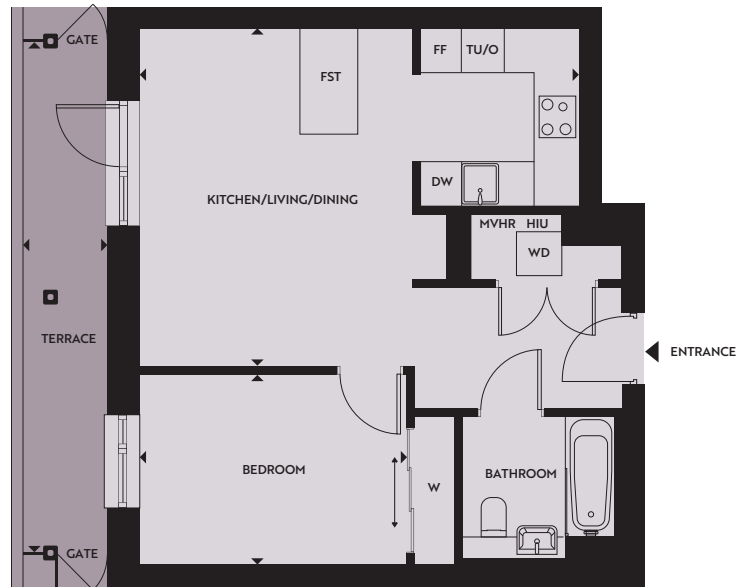
	LEVEL 9
	B1-L08-02 LEVEL 8
	LEVEL 7
	LEVEL 6
	LEVEL 5
	LEVEL 4
	LEVEL 3
	LEVEL 2
	LEVEL 1

B1-L08-03

LEVEL 8

1 bedroom apartment

BLOCK A1



Kitchen/Living/Dining

6.32m x 4.86m 20'9" x 15'11"

Bedroom

3.83m x 2.75m 12'7" x 9'0"

Terrace

7.34m x 1.22m 24'1" x 4'0"

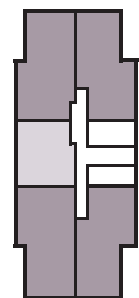
Gross Internal Area

51.28 sq m 551.97 sq ft

Key:

DW – Dishwasher **FF** – Fridge Freezer **FST** – Free-standing Table **HIU** – Heat Interface Unit
MVHR – Mechanical Ventilation Heat Recovery system **ST** – Storage **TU/O** – Tall Unit with integrated Oven
W – Built-in Wardrobe **WD** – Washer Dryer

The floorplans depict a typical layout of this apartment type. For exact apartment specification, details of external and internal finishes, dimensions and floorplan differences, consult your Sales Executive. Any areas, measurements or distances quoted are approximate only and should not be used when ordering floor coverings or furnishings. Floorplans are not shown to scale.



LEVEL 9
B1-L08-03 LEVEL 8
LEVEL 7
LEVEL 6
LEVEL 5
LEVEL 4
LEVEL 3
LEVEL 2
LEVEL 1

B1-L08-04

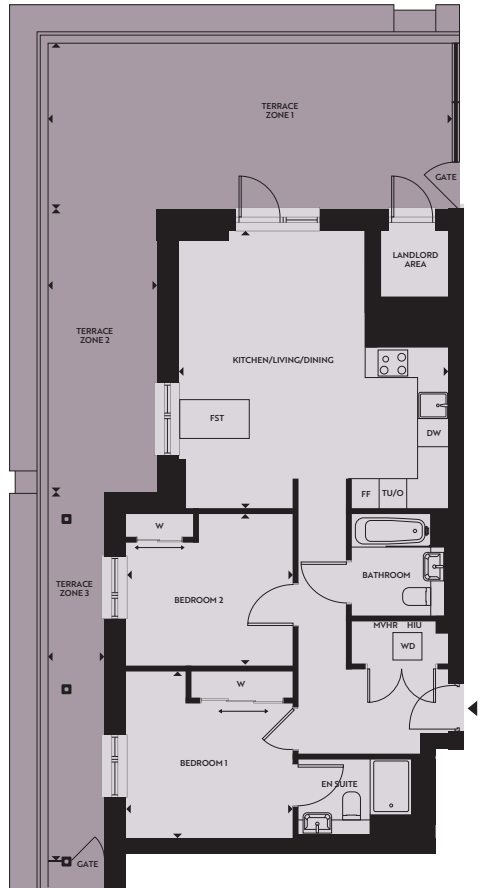
LEVEL 8

2 bedroom apartment

BLOCK A1



**HEYBOURNE
PARK**
NW9



Kitchen/Living/Dining

5.98m x 5.79m

19'7" x 19'0"

Terrace Zone 2

6.08m x 2.34m

19'11" x 7'8"

Bedroom 1

3.59m x 3.58m

11'9" x 11'9"

Terrace Zone 3

7.89m x 1.22m

25'11" x 4'0"

Bedroom 2

3.58m x 3.26m

11'9" x 10'8"

Gross Internal Area

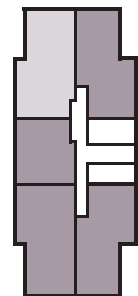
77.15 sq m

830.43 sq ft

Terrace Zone 1

8.68m x 3.58m

28'6" x 11'9"



Key:

DW – Dishwasher **FF** – Fridge Freezer **FST** – Free-standing Table **HIU** – Heat Interface Unit
MVHR – Mechanical Ventilation Heat Recovery system **ST** – Storage **TU/O** – Tall Unit with integrated Oven
W – Built-in Wardrobe **WD** – Washer Dryer

The floorplans depict a typical layout of this apartment type. For exact apartment specification, details of external and internal finishes, dimensions and floorplan differences, consult your Sales Executive. Any areas, measurements or distances quoted are approximate only and should not be used when ordering floor coverings or furnishings. Floorplans are not shown to scale.

LEVEL 9
B1-L08-04 LEVEL 8
LEVEL 7
LEVEL 6
LEVEL 5
LEVEL 4
LEVEL 3
LEVEL 2
LEVEL 1

B1-L08-05

LEVEL 8

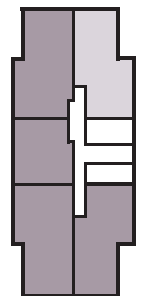
2 bedroom apartment

BLOCK A1



HEYBOURNE
PARK

NW9



Kitchen/Living/Dining 6.79m x 5.14m 22'3" x 16'10"	Terrace Zone 1 6.88m x 3.58m 22'7" x 11'9"
Bedroom 1 3.69m x 3.45m 12'1" x 11'4"	Terrace Zone 2 6.08m x 1.22m 19'11" x 4'0"
Bedroom 2 3.69m x 3.38m 12'1" x 11'1"	Gross Internal Area 73.57 sq m 791.90 sq ft

Key:

DW – Dishwasher **FF** – Fridge Freezer **FST** – Free-standing Table **HIU** – Heat Interface Unit
MVHR – Mechanical Ventilation Heat Recovery system **ST** – Storage **TU/O** – Tall Unit with integrated Oven
W – Built-in Wardrobe **WD** – Washer Dryer

The floorplans depict a typical layout of this apartment type. For exact apartment specification, details of external and internal finishes, dimensions and floorplan differences, consult your Sales Executive. Any areas, measurements or distances quoted are approximate only and should not be used when ordering floor coverings or furnishings. Floorplans are not shown to scale.

