

# B1-L01-03

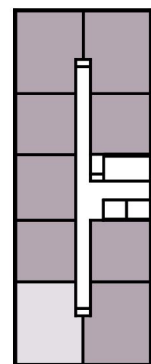
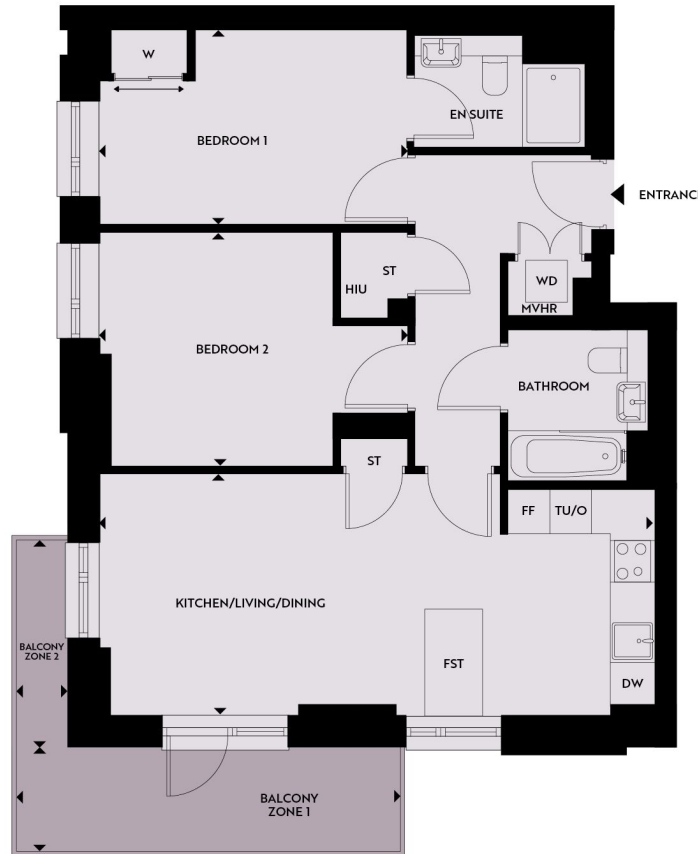


**HEYBOURNE  
PARK**  
NW9

## LEVEL 1

### 2 bedroom apartment

BLOCK A1



|   |               |  |               |
|---|---------------|--|---------------|
| <b>Kitchen/Living/Dining</b><br>7.95m x 3.46m | 26'1" x 11'4" | <b>Balcony Zone 1</b><br>5.49m x 1.49m   | 18'0" x 4'11" |
| <b>Bedroom 1</b><br>4.41m x 2.80m             | 14'5" x 9'2"  | <b>Balcony Zone 2</b><br>2.97m x 0.74m   | 9'9" x 2'5"   |
| <b>Bedroom 2</b><br>4.41m x 3.35m             | 14'5" x 11'0" | <b>Gross Internal Area</b><br>73.57 sq m | 791.90 sq ft  |

**Key:**

**DW** – Dishwasher **FF** – Fridge Freezer **FST** – Free-standing Table **HIU** – Heat Interface Unit  
**MVHR** – Mechanical Ventilation Heat Recovery system **ST** – Storage **TU/O** – Tall Unit with integrated Oven  
**W** – Built-in Wardrobe **WD** – Washer Dryer

The floorplans depict a typical layout of this apartment type. For exact apartment specification, details of external and internal finishes, dimensions and floorplan differences, consult your Sales Executive. Any areas, measurements or distances quoted are approximate only and should not be used when ordering floor coverings or furnishings. Floorplans are not shown to scale.

|  |         |
|--|---------|
|  | LEVEL 9 |
|  | LEVEL 8 |
|  | LEVEL 7 |
|  | LEVEL 6 |
|  | LEVEL 5 |
|  | LEVEL 4 |
|  | LEVEL 3 |
|  | LEVEL 2 |
|  | LEVEL 1 |

B1-L01-03